

隆雪家具公会简报



隆雪家具公会会员约 4500 人 参与木材理事会 MTC 疫苗接种计划

本会非常感谢马来西亚木材理事会（MTC）、马来西亚种植及原产业部（MPIC），及马来西亚木材工业局（MTIB），联手推动在万津Olak Lempit的 FIDEC 设立大型工业疫苗接种中心（PPVIN）。

该中心从 2021 年 7 月 28 日至9月6日期间，为 10,005 名家具与木材行业的工人接种疫苗。

隆雪家具公会会长刘建祥表示，该会的会员约超过75家公司安排他们的员工报名接种疫苗，此项目超过4500名的隆雪区会员员工支持参与。此外，外坡的家具公会会员约3000人报名参加。刘建祥会长表示，施打两剂疫苗的接种费用是每人马币70令吉，而马来西亚木材理事会为每名员工补贴马币30令吉，雇主只需支付剩余的马币40令吉。他希望在短期内可以加速家具业者员工的疫苗接种计划，以便协助工业领域复苏，减少职场感染。

至截止日期为止，MTC 已经为 10,005 名来自木材及家具领域的员工进行疫苗接种。其中参与此项目的还包括以下公会组织如：

- 1) 隆雪家具公会（KSFA）/马来西亚家具总会（MFC）
- 2) 马来西亚木材工业总会（MWIA）、
- 3) 马来西亚木材出口商公会（TEAM）、
- 4) 马来西亚木模及细木业理事会（MWMJC）、
- 5) 马来西亚合板制造商公会（MPMA）、
- 6) 马来西亚土著木材和家具企业家公会（PEKA）

The furniture industry remains grateful with the support of the Malaysian Timber Council (MTC) where through the collaboration with the Ministry of Plantation Industries and Commodities (MPIC) and Malaysian Timber Industry Board (MTIB) has established a PPV located at the FIDEC at Olak Lempit, Banting.

MTC provided a subsidy of RM30 per vaccine for each employee while the remaining RM40 was borne by the respective companies. The programme, which started operations on 28 July 2021, is scheduled to end on 6 September 2021 as many as 10,005 employees have successfully been vaccinated to date.

The President of KL & Selangor Furniture Association (KSFA) Mr Matthew Law Kian Siong reported that there are more than 75 KSFA's members companies arranges their employees in total 4500 to participate in this program. Beside, about 3000 workers from other states participated. He hopes to speed up the vaccination plan for employees in the furniture industry in the short term, so as to assist the recovery of the industrial sector and reduce workplace infections.

It is reported that MTC has been vaccinated 10,005 employees from the wood base industries. The following associations' members are participating in this MTC PPVIN @ FIDEC Olak Lempit program:

1. KSFA / MFC
2. MWIA
3. TEAM
4. MWMJC
5. MPMA
6. PEKA

SMEs Revitalization Plan – Financing Assistance & Grants

中小型企业振兴方案 – 融资与援助金

1

SME Corp and MIDF has introduced a new financing facility called SME Revitalisation Financing (SMERF) to assist small medium enterprises which are affected by the Covid-19 pandemic.

SMERF is a financing scheme under the PEMERKASA incentive and is implemented by MIDF.

Among the benefits of this scheme are:

- 1) Financing amount up to RM 250,000
- 2) Financing tenure up to 7 years
- 3) 3.0% p.a on reducing balance

大马中小企业机构 (SME CORP) 与 大马工业发展金融机 (MIDF) 合作推出最新的融资服务 ~ 中小企业振兴融资计划 (SMERF), 为陷入疫情困境的本地中小企业提供金融解决方案。SMERF 是人民与经济强化配套 (PERMERKASA) 下大马中小企业机构的重要项目, 具体执行单位是大马工业发展金融机 (MIDF)。

该融资计划包含:

- 提供高达马币 25 万令吉的融资;
- 融资期限最高为 7 年;
- 融资计划年利息 3%。



**We Are Here For You
And Your Business**

SME REVITALISATION FINANCING

At MIDF, we understand the challenges faced by SMEs. Under the SME Revitalisation Financing (SMERF), we offer a comprehensive financial solution to assist viable SMEs constrained by financial difficulties and underserved sectors at a profit of 3% per annum.

 3% p.a. on reducing balance	 Financing amount up to RM250,000	 Up to 90% financing
 Asset Financing i.e. Machinery / Equipment / Motor Vehicle / ICT Hardware & Software	 Working Capital Financing	 Financing Tenure up to 7 years

ABOUT US
The MIDF Group carries out investment banking, development finance and asset management. It serves entrepreneurs as well as large corporations and institutions.
Malayan Industrial Development Finance Ltd (now MIDF) was established in 1960 following the recommendations of the World Bank on how to finance the industrialisation of Malaysia, and over the last 61 years the MIDF Group has been part of the development and modernization of Malaysia's economy and capital markets.
MIDF is a wholly-owned subsidiary of Permodalan Nasional Berhad.

CONTACT US
☎ 1-300-88-6433
✉ GrowYourBusiness@midf.com.my
🌐 www.GrowYourBusiness.com.my
📱 MIDF Group

Powered by:  Implemented by: 

SMERF -- For further details kindly contact: 1300-88-6433 or

GrowYourBusiness@midf.com.my or go to www.GrowYourBusiness.com.my

2

The Time to
EXPORT
is Now.

**THE
EXPANDED
SCOPE IN
MARKET
DEVELOPMENT
GRANT
(MDG)**

Addressing the increased cost for export

Addressing the loss due to cancellation or postponement of export promotion activities

International Certification registration for export

Intellectual Property (IP) registration for international market

Branding and advertising for exports including digital platforms

ONLINE APPLICATION

**All SMEs are encouraged to apply
Online application starting 15th July 2021**
For more info please visit www.matrade.gov.my



MALAYSIA EXTERNAL TRADE DEVELOPMENT CORPORATION (MATRADE)
www.matrade.gov.my  [matradeHQ](https://www.facebook.com/matradeHQ)  [matrade](https://twitter.com/matrade)  [MATRADE](https://www.youtube.com/matrade)  [MATRADE](https://www.instagram.com/matrade)  [matrade.hq](https://www.linkedin.com/company/matrade)

马来西亚对外贸易发展局 (MATRADE) 启动市场开发援助金计划 (MDG) 的几项新项目, 旨在帮助中小企业应对新冠疫情。

新项目包括:

- 1) 因本地或海外展销会 / 展览取消或延期而造成的赔偿;
- 2) 出口马来西亚产品的物流费用报销;
- 3) 出口产品国际认证;
- 4) 国际市场知识产权注册;
- 5) 包括数码平台在内的产品出口广告推广费用。

MATRADE has announced several new initiatives of its Market Development Grant (MDG) incentive programme slated to begin on July 15, 2021 (Thursday).

Among the new initiatives covered are:

- 1) Compensation of the cancellation or postponement of trade fair/exhibition locally or overseas;
- 2) Reimbursement of logistic cost for exporting Malaysian products;
- 3) International Certification for Exports;
- 4) Intellectual Property (IP) registration for the international market;
- 5) Expenses for advertising and promotion for exports including on digital platforms

有兴趣参与者请浏览 Interested participants can visit MATRADE website:

<https://www.matrade.gov.my/en/malaysian-exporters/services-for-exporters/exporters-development/market-development-grant-mdg>

SMEs Revitalization Plan – Financing Assistance & Grants

中小型企业振兴方案 – 融资与援助金

3

EAP

马来西亚木材理事会 (MTC) 奖掖之一的 ~ 2021年出口援助方案 (EAP), 其截止日期已延长至 2021 年12 月 31 日。该奖掖方案旨在减轻马来西亚木材出口商的部分海运费用。

该方案的申请指南包括:

- 1) 每个公司最高可获得RM15,000奖掖;
- 2) 总运费成本的 25%, 最高可报销至RM15,000;
- 3) 集装箱和散货;
- 4) 只能CNF或CIF (不包括FOB)
- 5) 装运期从 2021年 6 月15 日延长至 2021 年12 月 31日。

Export Assistance Programme (EAP) 2021 from the Malaysian Timber Council (MTC) has been extended and enhanced until December 31, 2021. The EAP was intended to provide assistance to Malaysian timber exporters to defray the cost of ocean freight charges.

Among the enhanced guidelines for applicants are:

- 1) Maximum RM 15,000 per company eligibility
- 2) 25% of total cost freight up to maximum of RM 15,000 eligible for reimbursement
- 3) Container and Break Bulk Cargo
- 4) CNF or CIF basis only (FOB basis not eligible)
- 5) Shipment period extended from June 15, 2021 – December 31, 2021



MTC EXPORT ASSISTANCE PROGRAMME (EAP) 2021

The issue of container and vessel capacity shortage due to the COVID-19 pandemic has hit the global trade and has become a serious problem for importers and exporters as well as the logistics industry in Malaysia. The container and space shortage on board shipping lines have increased container freight rates for both export and import shipments by between 300% to 500%.

The Export Assistance Programme (EAP) 2021 established by the Malaysian Timber Council (MTC) is to provide assistance to Malaysian timber exporters, particularly SMEs to defray part of only the ocean freight charges.

GUIDELINES

EAP -- For further details kindly refer to MTC

Ms Adeline Goh (adeline@mtc.com.my) or Ms Noor Ateeqah (noorateeqah@mtc.com.my)

4

MTC Financial Incentive for Covid-19 Vaccination for the Timber Industry (FICV) is now open for application. Under this incentive, RM 30 financial assistance will be offered to every employee for the vaccination cost, subject to a maximum of RM 6,000 for each company (RM 30 x 200 workers).



Major requirements for applicants:

- 1) Company must be Malaysian owned company incorporated in Malaysia and based in Peninsular Malaysia only;
- 2) Should be a member of any one of the six timber associations (MFC, MWIA, TEAM, MPMA, MWMJC, PEKA);
- 3) Companies whom received subsidy from the VACOMS (PPVIN MTC @ Olak Lempit) are NOT ELIGIBLE for this incentive;
- 4) Workers whom have received vaccination from the public PPV which is free of charge are NOT ELIGIBLE for this incentive;
- 5) Workers receiving vaccination from the following are eligible for the incentive:
 - a) Government/ state vaccination programme (i.e. PIKAS, etc)
 - b) Private vaccination clinics/ primary care facilities
 - c) Mobile vaccination centres
 - d) On-site vaccination at employer's premises

For further information kindly refer to the attachment or contact Ms Lau Li Har (lau@mtc.com.my) or Ms Mariatul Amira Ismail (amira@mtc.com.my).

KSFA's Proposal for National Budget 2022

隆雪家具公会提呈国家预算案建议书

国家预算案即将在10月公布，隆雪家具公会应马来西亚家具总会之邀，在八月时呈交2022年国家财政预算案的提案，向财政部提交建议书。

此建议书是根据财政部提供的范围 - 即【中小企业融资】而提出建议。

The national budget 2022 will be announced in coming October. At the invitation of the Malaysian Furniture Council (MFC), KSFA has been submitted the proposal and plans for the 2022 national budget in August to MFC. This proposal is based on the scope provided by the Ministry of Finance (MOF) which is Financing for SMEs.

1) Moratorium on loan repayments

Issue:

The banks' provision of 6 months moratorium on loan repayments options, include loan rescheduling and restructuring. Based on current situation, the companies have to write-in and fill-up application form.

Moratorium of bank loan is the most important measure to help companies ride through the pandemic. As such it should be easy to implement without the need for companies to write-in and filling up lengthy application form set by individual banker.

Proposal:

As the current round of lock down has far greater adverse impact on the business and cash flow compared with MCO 1, it will take a longer time for businesses to heal and recover.

We propose that moratorium of loan repayment should be **extended for another 6 months** on top of the existing moratorium period. Furthermore, the moratorium **should be automatic**. Those who wish to continue paying can write in to inform their bankers.

2) Foreign Workers' Levy

Issue:

Foreign worker's levy is a material expense for furniture industry because it is an intensive labour industry.

However, furniture is not classified as an essential business. Most companies in the sector were closed for 2 to 3 months. As a result, the cash inflow came to an abrupt halt whereas companies still have to continue paying salaries and other fixed overheads.

Many companies have suffered severe cash flow problem and are surviving on additional bank loans.

Proposal:

We cannot deny that the furniture industry still needs the services from foreign workers. Hence, we would suggest the following:

- To reduce foreign workers' levy rate 50%** for manufacturing for next 2 year which is in year 2022 until year 2023;
- Reduced extension levy fees 50%** for foreign workers who have worked for more than 10 years. A skilled workers have the skills and expertise to deliver a job well done especially to furniture industry. If the national allow to retain these group of skilled workers who work for more than 10 years, furniture business will continue to thrive within a challenging and rapidly changing economy;
- It is also proposed to **suspend for a 12-month period** on the contribution to HRDF for local workers.

1) 暂缓偿还贷款:

银行提供 6 个月的贷款还款选择权，包括贷款重新安排和重组。根据目前的情况，公司必须填写申请表。暂缓银行贷款是帮助企业渡过疫情的最重要措施。因此，它应该方便企业申请，而无需填写冗长的申请表。

提议：与MCO 1相比，此次封锁对业务和现金流的不利影响要大得多，因此企业需要更长的时间才能愈合和恢复。我们建议在现有的还款期限的基础上，将还款期限再延长 6 个月。此外，暂缓偿还贷款应该是自动生效的。

2) 外劳人头税问题:

外劳人头税对家具行业来说是一种原料费用，因为家具业是一个劳动密集型行业。但是，家具并未被归类为关键行业。

家具行业的大多数公司都关闭了 2 到 3 个月。结果，现金流入突然停止，而公司仍需继续支付工资和其他固定管理费用。许多公司面临严重的现金流问题，靠额外的银行贷款生存。

提议:

不可否认，家具行业仍然需要外劳的服务。因此，我们建议如下:

- 在接下来的 2 年（即 2022 年至 2023 年）将外劳人头税征税率降低 50%;
- 将工作超过 10 年的外国工人的延期工作准证征费减免 50%。因为熟练工人具有技能和专业知识，可以出色地完成工作，尤其是在家具行业。如果国家允许留住这些工作超过 10 年的技术工人，家具企业将在充满挑战和快速变化的经济中继续蓬勃发展;
- 建议暂停为本地工人向 HRDF 缴款 12 个月。

KSFA's Proposal for National Budget 2022

隆雪家具公会提呈国家预算案建议书

国家预算案即将在10月公布，隆雪家具公会应马来西亚家具总会之邀，在八月时呈交2022年国家财政预算案的提案，向财政部提交建议书。

此建议书是根据财政部提供的范围 - 即【中小企业融资】而提出建议。

The national budget 2022 will be announced in coming October. At the invitation of the Malaysian Furniture Council (MFC), KSFA has been submitted the proposal and plans for the 2022 national budget in August to MFC. This proposal is based on the scope provided by the Ministry of Finance (MOF) which is Financing for SMEs.

3) Special deduction for 6 months based on discount rate given to tenant

Background:

It was proposed that a special deduction be given to property owners who provide at least 30% rental discounts to SMEs from April 2020 to June 2020. In the announcement of the Short-term Economic Recovery Plan on 5 June 2020, this special deduction was extended by three months, until 30 September 2020.

Proposal:

To propose government, allow owners of property to deduct the discount given to tenants from their rental source if the discount is more than 30% for the period from January 2022 to June 2022.

4) Double deduction for expenses incurred in performing on PCR test and/or purchasing of RTK antigen test (saliva and/or swab test kits), face mask, sanitising liquid and disinfectants, sanitising and disinfectant equipment

Issue / background:

Based on the MKN SOP, other than wearing a face mask, the disinfect process shall be conducted 3 times daily as well as mandatory to conduct RTK antigen test every TWO weeks. This will create cash flow pressure on SMEs.

Proposal:

Double deduction for expenses incurred in purchasing RTK antigen test kits (saliva and/or swab test kits), face masks, sanitising liquid and disinfectants, sanitising and disinfectant equipment and medical expenses in carrying out PCR tests for workers.

The rationale is these expenses have to be incurred in order to protect the workers and prevent spreading of Covid-19.

5) Withdrawal up to RM30,000.00 from EPF account 2

Issue/Background:

Furniture become an essential product during this pandemic, especially many of the employees are home base, working at home. Furniture become a tool for daily life that is convenient for daily work.

Proposal:

To allow EPF members to withdraw from their savings in account 2 for purposes of purchase furniture products and renovation of household.

3) 建议根据给予租户的折扣率，进行 6 个月的特别扣税：

去年，政府对2020年4月至2020年6月期间，为中小企业提供至少30%租金折扣的业主给予特别扣税。在2020年6月5日的短期经济复苏计划公告中，该特别扣税也被延长三个月，直到2020年9月30日。

提议：

向政府提出建议，允许业主在2022年1月至2022年6月期间，如果折扣超过30%，则从其租金来源中扣除给予租户的折扣。

4) 建议进行PCR检测和/或购买RTK抗原检测（唾液和/或拭子检测试剂盒）、口罩、消毒液和消毒剂、消毒和消毒设备等费用，提供双重扣税

根据国家安全理事会标准作业，除戴口罩外，每天进行3次消毒，并强制每两周进行一次RTK抗原检测。这将给中小企业带来现金流压力。

提议：

购买RTK抗原检测试剂盒（唾液和/或拭子检测试剂盒）、口罩、消毒液和消毒剂、消毒和消毒设备等费用，以及为工人进行PCR检测的医疗费用，应给予双倍扣除。

5) 建议允许从公积金第二账户提取高达 RM30,000.00

家具成为此次疫情期间必不可少的产品，尤其是很多员工居家办公，在家办公。家具成为日常生活的工具，方便日常工作。

提议：

允许公积金会员从账户2中提取用于购买家具产品和装修家庭的储蓄。

KSFA's Proposal for National Budget 2022

隆雪家具公会提呈国家预算案建议书

国家预算案即将在10月公布，隆雪家具公会应马来西亚家具总会之邀，在八月时呈交2022年国家财政预算案的提案，向财政部提交建议书。

此建议书是根据财政部提供的范围 - 即【中小企业融资】而提出建议。

The national budget 2022 will be announced in coming October. At the invitation of the Malaysian Furniture Council (MFC), KSFA has been submitted the proposal and plans for the 2022 national budget in August to MFC. This proposal is based on the scope provided by the Ministry of Finance (MOF) which is Financing for SMEs.

6) CP204 Tax estimate for YA 2022

Proposal:

Due to cash flow constraints, we hope the Government would allow the initial tax estimate of year 2022 to be fix at no less than 70% of the immediate last revised tax estimate (existing limit is no less than 85%)

7) Extend renovation and refurbishment of business premises up to RM500,000

Background:

As part of the First Economic Stimulus Package announced on 27 February 2020, it was proposed that a tax deduction of up to RM300,000 be given on costs for renovating and refurbishing business premises, where such costs are incurred between 1 March 2020 and 31 December 2020. Thereafter, in the Short-term Economic Recovery Plan announced on 5 June 2020, it was proposed that the tax deduction be extended to cover such costs incurred until 31 December 2021.

Proposal:

Allow to extend a tax deduction and **increase of up to RM 500,000** will be given for expenses incurred on renovation and refurbishment of business premises from 1 January 2022 to 31 December 2022.

8) Options for bringing back the Goods and Services Tax (GST)

Proposal:

Given the weak domestic and external environments brought about by the COVID-19 pandemic, we believe that priority should be given to strengthen the economy and restore more favourable business conditions. In this regard, we proposed to **reintroduce the GST** by reviewing the weaknesses and leakage of the existing SST system and improving upon the former GST system implemented in 2015.

We suggest the following:

- a) Propose GST rate to 3%;
- b) **Propose maintain GST registration threshold at RM500,000**
- c) Propose applied to all E-commerce retailers and platform that provide goods and services transaction including B2B and B2C

6) 2022年 CP204 Tax 的预

提议：由于现金流限制，我们希望政府允许将 2022 年的初始税收估计固定在不低于上次修订税收估计的 70%（现有限制不低于 85%）

7) 建议允许翻新营业场所税收减免，延长及提高至RM500,000

2020 年 2 月 27 日宣布的第一个经济刺激计划的一部分，提议对在 2020 年 3 月 1 日至 12 月 31 日期间的营业场所翻新费用给予最高 30 万令吉的税收减免。此后，在 2020 年 6 月 5 日公布的短期经济复苏计划中，提议将税收减免扩大到涵盖此类费用，直至 2021 年 12 月 31 日。

提议：

从 2022 年 1 月 1 日至 2022 年 12 月 31 日期间，营业场所翻新所产生的费用将允许延长税收减免和增加高达 RM 500,000。

8) 恢复商品和服务税（GST）

提议：

鉴于 COVID-19 大流行带来的国内外环境疲软，我们认为应优先加强经济，恢复更有利的商业环境。就此，建议通过检讨现有商品及服务税制度的弱点和漏洞，并在 2015 年实施的原商品及服务税制度的基础上，重新引入商品及服务税。

建议如下：

- a) 建议消费税税率为 3%；
- b) 提议将 GST 注册门槛维持在 RM500,000
- c) 提案适用于所有提供商品和服务交易的电子商务零售商和平台，包括 B2B 和 B2C

LEGAL ADVISE - HOW TO PAY FOR SALARY DURING FMCO?

KSFA WEBINAR

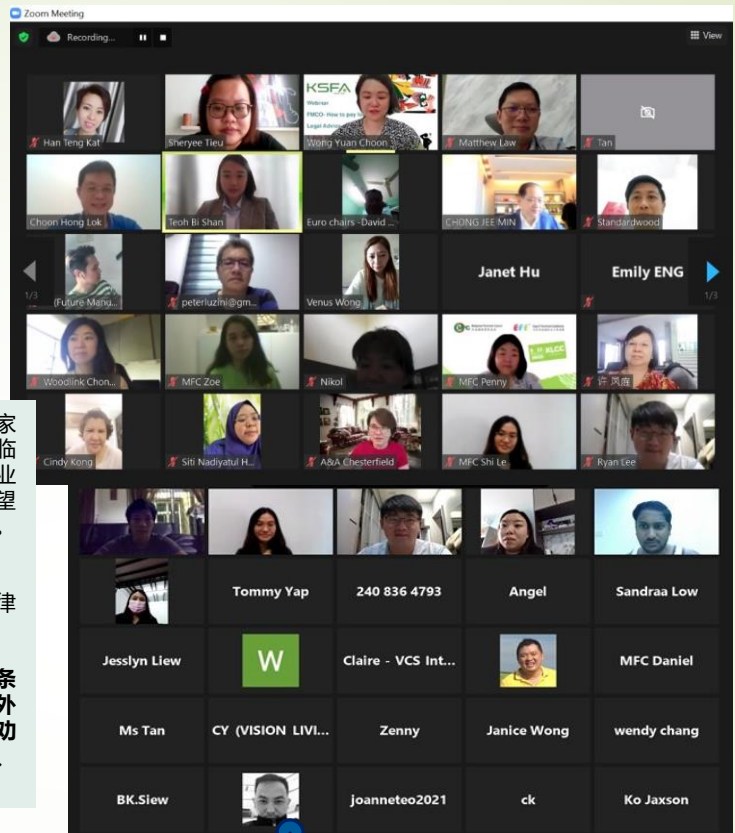
The purpose of the webinar is regarding the challenges facing by the Furniture Industry players.

As our industry are fully lock down from 1st June 2021 until a further noticed when the average daily infection rate below 4,000; the usage of ICU beds at moderate level, and full vaccination for the population already vaccinated reaches 10%. Once the criteria reach, our industry will have the opportunity to resume operations

As employers, the members are facing a dilemma on the matter of workers' wages. Therefore the association arranged a webinar to arranged KSFA legal advisors provide members their legal advice.

Invited Legal Advisors:

- Lawyer Chong Jee Min (JM Chong, Vincent Chee & Co);
- Lawyer Teoh Bi Shan (Bishan & Partners); and
- Lawyer Lok Choon Hong (Pintas IP Group)



由于疫情严峻，我国从 2021 年 6 月 1 日起进行全面封锁。家具行业业者在全面封锁期间深受其害，无法营运之余，也面临货物无法如期交货而被客户罚款，加上员工薪资需要支付，业者面临两难的局面。因此，本会举办了一场网络研讨会，希望能提供法律知识，为雇主提供法律建议处理工人的工资问题。此讲座获得热烈反应，共有65家会员公司报名参加。

席间，会员提问许多与薪资相关的法律意见，都得到三位法律顾问的说明和建议。

根据“马来西亚法律第 265 条第 IV 部分-工资扣除，第 24.1 条文”，其书面说明“雇主不得从雇员的工资中扣除除本法规定外的工资”。但是由于疫情关系导致公司业务停止运作，雇主被迫告应与员工沟通，在征得员工的同意下，方能采取任何减薪、扣除年假或津贴的方式等动作。

拨一万四千令吉予Kechara Soup Kitchen 本会向弱势群体派发膳食

♥ 《同心协力，送暖抗疫》 ♥

隆雪家具公会 (KSFA) 的福利与文教计划(CSR)的主任张盛量先生携同秘书处于9月13日 (星期一) 上午十一时，前往拜访位于隆市 Jln Imbi的 Kechara Soup Kitchen (KSK) 慈善机构，并且捐出总共 RM14,025给KSK。这除了RM3,000的善款之外，还包括赞助两周，即1,650份餐食、以及干粮食品包裹等。

KSK 是一个在马来西亚超过13年的非政府的组织；为无家可归者和城市贫民分发食物、基本医疗援助和咨询服务。此外，他们还提供各种类型的援助—从为弱势群体提供食物到设立流动诊所和食品银行、提高和培训单身母亲的就业机会与为老年人提供住所。除此之外，他们还帮助无家可归者就业，好让他们重新踏入社会。

The Head of CSR program Mr. David Cheong, together with the secretariat to performed corporate social responsibility on behalf of the Kuala Lumpur & Selangor Furniture Association (KSFA), courtesy visited the Kechara Soup Kitchen (KSK) in Jln Imbi, KL. **We contributed a total of RM14,025 to KSK. This includes a donation of RM3,000, as well as sponsorship of meals distribution for 2 weeks.**

KSK is a non-religious, non-governmental organisation (NGO) in Malaysia for over 13 years; they distribute food, basic medical aid, and counselling to the homeless and urban poor of Malaysia. In addition, they also providing a various type of assistance – from feeding the less privileged to setting up mobile clinics and food banks, upskilling and training single mothers for job placements and providing shelter for the elderly. Besides that, they also help the homeless employable and for them to re-enter society.



福利与文教活动 - 《同心协力，送暖抗疫》 Corporate Social Responsibility (CSR)

疫情期间，许多公司企业，商家甚至是平民百姓都受到严重的影响。因此，不少非盈利的慈善机构也受到牵连，面临物资或资金捐赠减少的情况。

隆雪家具公会关心受疫情影响的单位，在获得家具总会以及其理事们和会员们的响应下，筹得将近5万令吉的善款，以便在疫情期间捐助弱势群体与疫苗接种中心，并善用有限的资金发挥企业社会责任，回馈社会，共同抗疫。

In times of a pandemic, many companies, businesses, and even civilians have been severely affected. As a result, many non-profit charities have also been implicated and faced a reduction in donations of necessities and funds.

With the response of the committee members of KSFA as well as supporting from MFC, nearly RM50,000 fund has been raised. In order to donate or contribute to the vulnerable groups and vaccination centres during the pandemic, and make good use of limited fund to role corporate social responsibility, give back to the society, and jointly fight the epidemic.



Rumah Titian Kaseh



马来西亚诚爱残障收留社
Persatuan Kebajikan Chen Ai OKU



善待障碍与孤儿福利之家
Kindly Orphan & Handicap Welfare Homes

隆雪家具公会福利与文教计划主任张盛量先生，携同秘书处营运总监黄婉君及黄婉玟代表本会，在疫情期间陆续拜访和捐助位于隆雪区的残障中心及孤儿院等，并移交善款与提供中心所需的食物与物资。其中包括位于吉隆坡的Rumah Titian Kaseh、雪州Bandar Mahkota Cheras的善待障碍与孤儿福利之家、IQ70plus 建安智障儿童家福协会与马来西亚诚爱残障收留社。并在各中心的工作人员见证下，分别移交物资与善款，总值约RM20,000 以协助中心的日常开销、教育费以及医药费等等。

Mr. David Cheong, the head of CSR Program, together with the secretariat staffs Mdm Wong Yuan Choon (COO) and Venus Wong, courtesy visited to some disabled centres, orphans and elderly homes in Klang valley during the pandemic and handed over the donations and the foods & necessities.

There are Rumah Titian Kaseh (RTK) in Titiwangsan, and the Kindly Orphan & Handicap Welfare Homes in Bandar Mahkota Cheras, the Persatuan Kebajikan Kanak-kanak Terencat Akal Malaysia (IQ70plus) at Jalan Gasing and Persatuan Kebajikan Chen Ai OKU at Kelana Jaya.

In addition, under the witness of their staff, the foods and donations were handed over. The total value spent around RM20,000 to assist the daily expenses, education and medical expenses of the centres.

特别鸣谢家具总会及本会会员，本会共筹获
RM49,888.88 善款(捐款排名不分先后)

Special thanks to MFC and the following member companies for the donations. **The total amount received was RM49,888.88.**

(Name list in no particular order):

- 1). Malaysian Furniture Council
- 2). Jemaramas Jaya Sdn Bhd
- 3). Huts Furniture Sdn Bhd
- 4). Eukenco Furniture Trading Sdn Bhd
- 5). LSK Mattressworld Sdn Bhd
- 6). Purefoam Manufacturing Sdn Bhd
- 7). Heap Heng Leong Sdn Bhd
- 8). Seni Daya Woods Industries (M) Sdn Bhd
- 9). Aurora Haus Sdn Bhd
- 10). Kintex (KL) Sdn Bhd
- 11). VCS Interior Sdn Bhd
- 12). Perabot V Seng Jaya Sdn Bhd
- 13). Euro Chairs Manufacturer (M) Sdn Bhd
- 14). Tawei (M) Sdn Bhd
- 15). Vision Foam Industries Sdn Bhd
- 16). Hup Chong Furniture Sdn Bhd
- 17). Luzini (M) Sdn Bhd
- 18). Sern Kou Bhd
- 19). Aerofoam Manufacturing (1969) Sdn Bhd
- 20). IB Sofa Sdn Bhd
- 21). A&A Chesterfield Sdn Bhd
- 22). Goodnite Enterprise (M) Sdn Bhd
- 23). Fiori (Malaysia) Sdn Bhd
- 24). Novel Furniture Sdn Bhd
- 25). Dynamic Furniture Industries (M) Sdn Bhd
- 26). MLFD Group Sdn Bhd
- 27). Crown Furniture Manufacture Sdn Bhd
- 28). Innhome Design Sdn Bhd
- 29). Lam Yang Furniture Manufacturer Sdn Bhd
- 30). More Design Retail Sdn Bhd
- 31). C Son Office Furniture Sdn Bhd
- 32). Innovatex Sdn Bhd
- 33). Sunny Yong
- 34). Pusan Furniture Industries (M) Sdn Bhd
- 35). Promptcon Enterprise Sdn Bhd
- 36). Tonics Furniture Sdn Bhd
- 37). PSE Paper Industrial Sdn Bhd
- 38). Reztec Group Sdn Bhd
- 39). Jashen Interior Design Sdn Bhd
- 40). Topworld Industries
- 41). Syncoates (M) Sdn Bhd



马来西亚建安智障儿童家福协会 (IQ70plus建安家福)
Persatuan Kebajikan Kanak-kanak Terencat Akal
Malaysia (IQ70plus)

隆雪家具公会捐赠 20 台平板电脑 惠及宋溪毛糯弱势家庭学童

本会于9月11日（星期六）下午三点，在隆雪家具公会会所楼下由会长刘建祥先生携同福利与文教计划(CSR)的主任张盛量先生，以及秘书处职员一同颁发20台平板电脑给宋溪毛糯新村里的弱势家庭小学学生，帮助弱势学童在居家上课期间不再因为设备问题，无法居家学习。希望藉此降低疫情对学习所造成的影响，并提供弱势家庭孩童平等学习机会以及鼓励学生勤奋向学，即使在家也能在线上持续学习。

此外，该会衷心感谢所有理事以及会员们的善心义举之外，同时也特别感谢宋溪毛糯慈善暨教育基金会主席陈文俊先生、MPKKSB村长何淑云女士与宋华家协副主席Betty Sue以及基金会理事的出席见证以及帮助派送平板电脑给20学生。



KSFA donated 20 tablets to students from disadvantaged families in Sg. Buloh

On behalf of the Kuala Lumpur & Selangor Furniture Association (KSFA), the President Mr. Matthew Law, Head of CSR program Mr. David Cheong, and Secretariat staffs have been distributed the tablet devices to the 20 students from Kg. Baru Sungai Buloh at KSFA secretariat office.

This program aimed to help the disadvantaged students to overcome and can be continued their studies during the online classes were schools are ordered to closed. With this tablet that provided by KSFA, this group of students at least can attend their online classes, submit their homework and continue study even at home. They indeed deserved this learning opportunity too.

We expressed our gratitude to the members for their supporting in the fundraising. Besides, the president special thanks to the Chairman of Persatuan Kebajikan Dan Pendidikan Sungai Buloh Mr. Mega Tan, the MPKKSB Village Head Madam Hoo and the Vice President of PIBG SJKC Sg Buloh Ms. Betty Sue for the witnesses and their assistance in order to help KSFA delivered the tablets to students

提供物资给疫苗接种中心前线人员

Provided Necessities to 3 PPV Centres



03.08.2021
MTC Olak Lempit, FIDEC



06.08.2021
Bdr Baru Sg. Buloh, Dewan Meranti



09.09.2021
Bukit Jalil, Axiata Arena

本会会长刘建祥先生、秘书长江金蒂女士、CSR小组主席张盛量先生与理事许家诚先生携同秘书处职员，分别前往探访并捐赠物资予上述的疫苗接种中心(PPV)，每家疫苗接种中心各获得价值约 RM6,000 的物资，本会感谢前线人员在疫情期间的奉献和付出。同时，也感谢宋溪毛糯慈善暨教育基金会主席陈文俊先生、MPKKSB村长何淑云女士，以及马来西亚红新月会 (MRC) 志愿者- John Goh先生的协助与安排以上工作。

KSFA President Mr Matthew Law, Sec Gen Madam Cindy Kong, CSR exco team members David Cheong (head of CSR) and Jason Koh courtesy visit to the above Pusat Pemberian Vaksin (PPV) centres. We allocated approximately RM6,000 contributed necessities to the selected vaccination centres in Klang Valley thank you to the frontliners for their contribution during the epidemic. In addition, we are special thank you to the chairman of Persatuan Kebajikan Dan Pendidikan Sg Buloh- Mr. Mega Tan, Village Head of MPKKSB- Madam Hoo, and the Volunteer of the Malaysian Red Crescent Society (MRC) -- Mr. John Goh for the assistance and arrangements for above programs.

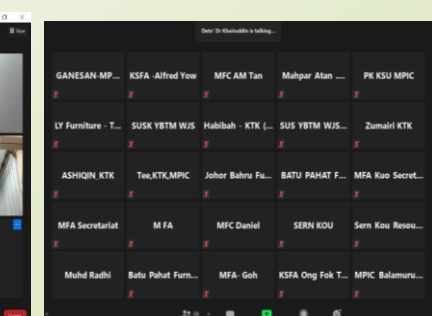
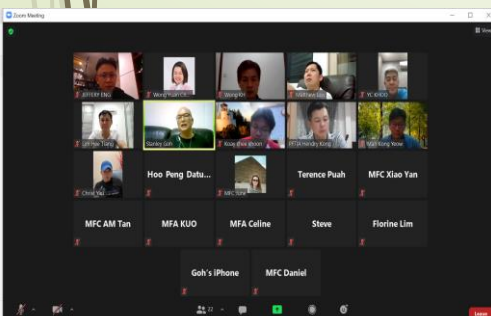
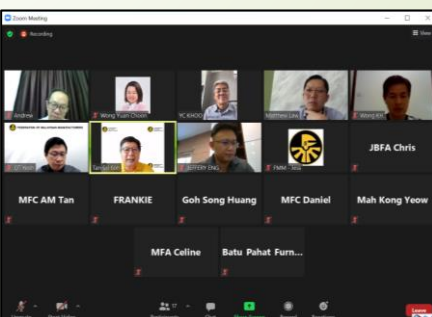
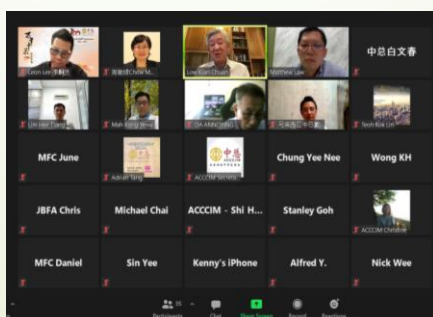
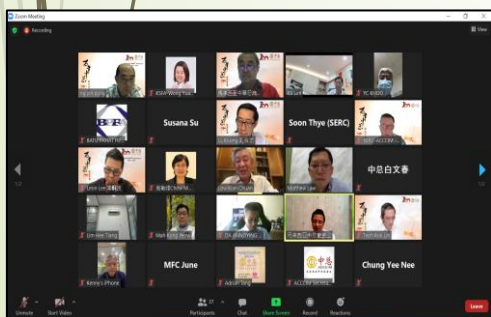
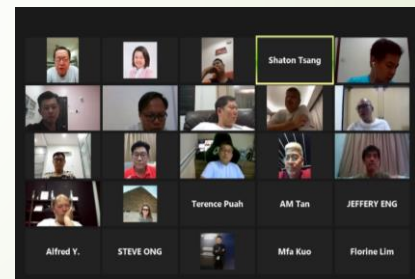
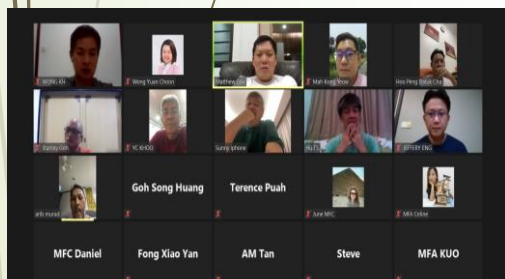
Meetings Discussion on Concerning Issues Affecting the Furniture Industry During MCO 3.0



20 meetings attended by KSFA committee members

在为时3.5个月的限制行动管制令期间（1/6/2021-16/8/2021），隆雪家具公会连同总会以及13州属会的理事成员，一共进行了多达20项讨论会议，与各界和相关的政府部门等，商讨允许家具业恢复营业。

During the 3.5-months restricted movement control order period (1/6/2021-16/8/2021), KSFA, together with the Malaysian Furniture Council (MFC) and the council members of 13 state associations, held a total of 20 discussion meetings with all related government departments, to discuss and requested to allow the furniture industry to resume business.



MEMO Distribution during MCO 3.0

No	Date	MEMO
1	01/06/2021	PM announces Pemerkasa Plus aids as lockdown looms
2	01/06/2021	Notice on short term / temporary approval permits for workers accommodation 2021-2023
3	01/06/2021	Notice of Furniture sub sector and supply of wood products are allowed to operate in FMCO by MPIC Minister
4	03/06/2021	Notice on Companies facing difficulties to ship their products out during FMCO
5	03/06/2021	MKN list that non-essential industry is not allow to occupy
6	04/06/2021	Notice on ACCOM / SERC Survey on Business and Economic Condition for 2021
7	04/06/2021	Noticed to members in Sg Buloh area
8	08/06/2021	Notice on Covid 19 Vaccination Modules for the Manufacturing Sector
9	08/06/2021	MKN Telegram Notice: PDMM To allow 2 staffs of companies in Non Essential economic sector to return to work to process payroll
10	08/06/2021	MITI Approval Letter not to be accepted.
11	09/06/2021	Notice of MATRADE invitation on KASBUILT 2021 Exhibition
12	10/06/2021	E Commerce & Digital Adoption Readiness in the Malaysian Timber Industry, and how to Deal with it
13	10/06/2021	MTC organizing a B2B with UAE furniture importers on 24 June 2021.
14	11/06/2021	Request to prioritise Furniture Industry for vaccination
15	12/06/2021	Program Immunisasi Industry Covid 19 Kerjasama Awam Swasta (PIKAS) for Manufacturing Sector
16	12/06/2021	Info on Companies wanting to ship their products out during FMCO June 15-18 2021
17	13/06/2021	Reminder - Info on Companies wanting to ship their products out during FMCO June 15-18 2021
18	14/06/2021	Latest notice of Program Immunisasi Industry Covid 19 Kerjasama Awam Swasta (PIKAS)
19	14/06/2021	Invitation: Maxis Business Webinar - Grow your business online & boost sales 23/06/2021
20	15/06/2021	EFE trade enquiry from UAE
21	15/06/2021	Notice on Loading & Unloading of Goods at factories for Import/Export Purposes
22	16/06/2021	MFC letter to all the State Furniture Association: Notice on current status on reopening of furniture industry operation and other related matters during the FMCO
23	16/06/2021	PM change name to: Tan Sri Dato Haji Mahiaddin bin Haji Md Yasin
24	16/06/2021	Notice of MTC Digital Marketing Entrepreneurship Program (DIMEP)
25	16/06/2021	Survey on PIKAS Vaccination
26	17/06/2021	MATRADE National Export Day 2021
27	18/06/2021	Reminder - PIKAS
28	18/06/2021	Reminder - Survey on PIKAS
29	18/06/2021	Immediately Action: Gentle Reminder to adhere to the SOP and Government Directive
30	19/06/2021	Notice on Wage Subsidy Program (PSU) until July 31 2021
31	22/06/2021	Petition to request for reopening of furniture sector operation from June 29 2021
32	22/06/2021	PIKAS Form - Mysejahtera ID matter
33	23/06/2021	Reminder - Petition to request for reopening of furniture sector operation from June 29 2021
34	23/06/2021	KSFA Newsletter July Issue
35	24/06/2021	EFE - Business Opportunity at your door step
36	25/06/2021	MTC - Covid 19 Immunisation Programme For The Timber & Furniture Industry (Olak Lempit)
37	26/06/2021	Reminder - MTC - Covid 19 Immunisation Programme For The Timber & Furniture Industry (Olak Lempit)
38	27/06/2021	MKN - National Recovery Plan - Export Oriented Furniture Factories allowed to operate UNDER PHASE 2 Planing
39	27/06/2021	Lock down will not end on June 28 as daily cases still above 4k
40	28/06/2021	Reminder: Consent for Employers to Negotiate Workers' Wages for recipients of PEMERKASA PLUS WAGE SUBSIDY 3.0 (PSU 3.0) Programme
41	29/06/2021	Notice on PEMULIH Economic Plan 28.06.2021
42	29/06/2021	KSFA webinar FMCO - How to pay for salary Legal Advice on Workers' Wages Issue
43	29/06/2021	Notice on MFC Newsletter Issue 6
44	02/07/2021	Notice on Wages Subsidy Programme (PSU 4.0) & Penjana Kerja 3.0
45	03/07/2021	Notice on Loading/Unloading activities on EMCO areas (Jul 3 - 16, 2021)
46	04/07/2021	Reminder on using Mysejahtera App for check in (MANDATORY)
47	06/07/2021	MTC - Business Visit to High Point Market, North Carolina USA in October 2021
48	06/07/2021	MTC Survey on Timber market in MEA and Emerging Markets
49	08/07/2021	PIKAS Latest Updated- Company need to resubmit via ONLINE platform
50	09/07/2021	Registration of Undocumented Migrants under PIKAS
51	10/07/2021	MTC Webinar: Content Marketing Strategies for B2B in Timber Industry
52	12/07/2021	MFC appealed to the government to allow the resumption of operations of the wood and furniture industry
53	13/07/2021	Virtual Webinar: Empowerment of Employers in Prevention of Covid 19 in Workplace
54	13/07/2021	MIRCA Webinar: Using Digital Marketing Techniques to Grow Your Business
55	14/07/2021	Gentle Reminder - Webinar: Content Marketing Strategies for B2B in Timber Industry
56	14/07/2021	Receiving, Loading and Unloading Activities for Imported Non Essential Goods and Cargo Permitted in EMCO Area for Import/Export purposes
57	15/07/2021	MATRADE New Market Development Grant (MDG) Initiative
58	16/07/2021	Gentle Reminder: Wages Subsidy Programme 4.0 under Pemulih
59	16/07/2021	Selangor EMCO ends at midnight 16/07/2021
60	17/07/2021	Selangor from EMCO back in Phase One of NRP, Loading and Unloading goods
61	17/07/2021	Selangor back to Phase One of NRP, more activities allowed
62	21/07/2021	Charity Fund raising
63	22/07/2021	MTC Webinar: Content Marketing, Video Marketing
64	22/07/2021	Noticed to members-Please well manage your foreign workers to avoid loitering outside
65	22/07/2021	President Khoo from BFM 89.9 regarding the current situation of the Furniture Industry and appeal to government to consider including Furniture Retailers, Showroom allowed to operate under Phase 2 of NRP
66	23/07/2021	Notice on MDG online webinar by MATRADE regarding the Marketing Development Grant (MDG)
67	23/07/2021	PDF File: List of Common Use PPV under PIKAS

No	Date	MEMO
68	24/07/2021	Furniture factories seek no to operate after workers vaccinated
69	27/07/2021	Extended deadline of EAP 2021
70	28/07/2021	MTC PPV in @ FIDEC Olak Lempit Kick Start
71	28/07/2021	Info sharing: MFC newsletter Issue 7
72	29/07/2021	Notice on submitting appeal letter to PM to request reopening of all non-essential sectors on Aug 2, 2021 Monday
73	30/07/2021	ONLINE Survey of Covid 19 Vaccination Rate by Industry
74	02/08/2021	Reminder: ONLINE Survey of Covid 19 Vaccination Rate by Industry
75	02/08/2021	MTC Olak Lempit PPV Centre have 160 extra quota
76	03/08/2021	Reminder: Notice on MDG online webinar by MATRADE
77	03/08/2021	Reminder: ONLINE Survey of Covid 19 Vaccination Rate by Industry
78	03/08/2021	KSFA team arrived Olak Lempit PPV centre for charity activity
79	03/08/2021	Sektor perikanan rugi RM60 juta sehari akibat pandemik
80	06/08/2021	Charity activities at PPV Dewan Meranti Sg Buloh
81	06/08/2021	KSFA e-newsletter-Special Edition, Write up for meeting with Ministers
82	08/08/2021	Teks ucapan YAB PM-Kemudahan bagi individu yang telah terima vaksinas lengkap
83	09/08/2021	Portal Rasmi Pelan Pemulihan Negara
84	12/08/2021	MTC Online Session on E-Commerce Titled: E-Commerce for the Timber Industry 1st Session
85	14/08/2021	2nd Badge-ONLINE Survey of Covid 19 Vaccination Rate by Industry
86	15/08/2021	Fasa 1 PPN - Kerajaan setuju buka 11 sektor ekonomi mulai 16 Ogos
87	15/08/2021	Notice to resume operation for Non Essential Manufacturer's and Retailers across all Phases
88	16/08/2021	KPDNHEP Sambut Baik Pembukaan Lebih Banyak Sektor Ekonomi Di Negeri-Negeri Fasa 1 Dan Fasa 2
89	16/08/2021	Gentle Reminder: E-Commerce for the Timber Industry - 1st Session
90	17/08/2021	MITI Latest SOP for Manufacturing Sector - Phase 1-3 16082021
91	17/08/2021	MITI SOP for manufacturing sector date 16082021
92	17/08/2021	Retailers Members in FASA 1&2, affairs that 50% of state vaccination restrictions have been lifted.
93	18/08/2021	Retailers can register with MITI CIMS 3.0 now. The sector is open now.
94	18/08/2021	MITI - Pengilangan & Pembuatan SOP updated on 17.08.2021
95	18/08/2021	Requirements for Retailers to resume operation 18082021
96	18/08/2021	MITI FAQ - Manufacturing Sector
97	19/08/2021	MTC Timber Talk Webinar Session 28.08.2021
98	19/08/2021	KPDNHEP LATEST FAQ on Retail Sector 19082021
99	19/08/2021	Kindly Reminder to Manufacturing Sectors that prior to resuming operation no matter the fully vaccinated rate, manufacturers are still required to apply and download the latest MITI approval letter from the CIMS 3.0 system
100	19/08/2021	Notice on MNSC Survey on Shipping and Logistics Fees
101	20/08/2021	Notice on MTC TIMB3R Design Incubator Programme Online Session
102	21/08/2021	Notice on MOT Survey on National Freight Data
103	21/08/2021	MFC Sec Gen as well as KSFA President Mr Matthew Law being interviewed by Buletin Utama
104	22/08/2021	Economy re-opening only solves partial furniture industry woes
105	23/08/2021	Notice on MTC TIMB3R Design Incubator Programme Online Session
106	24/08/2021	MTC Webinar: Is Infographics or Podcasting More Relevant to the Timber Industry?
107	25/08/2021	MTC's TIMB3R DIP 2.0 Programme
108	25/08/2021	KPDNHEP SOP (latest updated on 23082021) - for Furniture Retailers and Traders
109	27/08/2021	Teks ucapan YAB Dato Sri Ismail Sabri PM Malaysia - Pembentukan Kabinet
110	27/08/2021	Notice on Timber Industry Review on Australia's Illegal Logging Regulation
111	28/08/2021	Automation Grant VS Reinvestment Allowance (RA)
112	30/08/2021	MFC Newsletter Issue 8
113	01/09/2021	Notice on BizConnect Website
114	02/09/2021	Self-Test Covid 19 Test Kit for conditional Approval (Approved)
115	02/09/2021	Gentle Reminder - MTC's TIMB3R DIP 2.0 Programme
116	03/09/2021	Delivery and Collection of Cargo from Port Klang and PKGZ
117	03/09/2021	Online Business Matching and Virtual Exhibition with Worldex Exhibition and Promotion
118	03/09/2021	Selangor SME Digitalisation Matching Grant Forum 14
119	03/09/2021	National Budget 2022
120	06/09/2021	Notice on updated Vaccination Survey Form (Round 3)
121	07/09/2021	Matters to be take note applying for MITI CIMS 3.0
122	07/09/2021	Gentle Reminder - MTC TIMB3R DIP 2.0 Programme
123	08/09/2021	Webinar - Defining Your Brand Positioning
124	08/09/2021	KL, Putrajaya to enter Phase 2 from Friday
125	09/09/2021	Charity Programme - KSFA donated 150ctns mineral water and 140 ctns cup noodles to PPV Bukit Jalil.
125	09/09/2021	Scan Your Showroom Make it Visible For 360°
126	10/09/2021	MKN SOP - Fasa 2 (Selangor, WP KL, Putrajaya)
127	13/09/2021	Charity Programme - KSFA donated Android Tablet to Student.
128	14/09/2021	Pandemic Recovery Support Programme by MDEC, MATRADE and Alibaba
129	14/09/2021	Survey on Foreign Workers Request by Furniture Industry (September 2021)
130	15/09/2021	Notices on MDEC Go-eCommerce Virtual Conference
131	17/09/2021	Reminder - Survey on Human Resources (Workers) Request by Furniture Industry (September 2021)
132	17/09/2021	Charity Programme - Kechara Soup Kitchen
133	17/09/2021	Charity Programme- Kindly Orphan & Handicap Welfare Homes
134	18/09/2021	MKN SOP for Fasa 1,2,3,4